

TAKO

RAISED FLOOR SYSTEMS

A Flexible & Economically Viable Solution For Space Planners



Answer For Today's Highly Demand World Of:

- High - Tech Room
- Office Automation
- Computer Room
- Trading Floor
- Control Room
- Intelligence Office
- Semi - Conductor
- LAN Quest Center
- Robotic - Centers
- Utility Room
- Clean Room
- Convention Center
- Medical Centers

TAKO Cementitious Infill Steel Panel Selection Guide

TYPE	PANEL GRADE	ROLLING LOAD (kN) (76 x 25mm)	IMPACT LOAD (Kg)	CONCENTRATED LOAD (kN/25mm ²)			DEFLECTION (mm)	UNIFORM LOAD (kN/m ²) <1.5mm	ULTIMATE LOAD (kN/m ²)
				LB	KN	KG			
TK 668S	Light	3.0	40	668	3.0	306	< 2	8	40.0
TK 800	Medium	3.6	50	800	3.6	363	< 2	12	44.5
TK 1000	Heavy	4.5	50	1000	4.5	454	< 2	13	55.4
TK 1250	Extra Heavy	5.5	60	1250	5.5	568	< 2	14	63.8
TK 1500	Extreme Heavy	6.7	60	1500	6.7	681	< 2	16	83.8

Dimension Tolerance & Accuracy (MOB/CISCA)

Panel Size	GB 6650 - 86 Standard required	Test Result (Min 3 readings)
1. Metro - Logical Extreme Deflection	+ 0.20 mm	+ 0.08 mm
2. Thickness Extreme Deflection	+ 0.30 mm	+ 0.06 mm
3. Flatness	Less than 0.50 mm	0.24 mm
4. Vertical	Less than 0.30 mm	0.16 mm

TAKO Cementitious Infill Steel Panel raised floor systems comply all the above standard accordingly with U.K.-MOB & U.S.-CISCA. Both of the standards have been used for raised floor systems' material quality control & test standard. Test for loading figure performance conducted by Antistatic Product Quality Supervision & Test Centre - Information Technology Dept, PRC, also tested by the Malaysia SIRIM Bhd.



TAKO Raised Floor Panels

- Cementitious Infill Steel HPL / Vinyl Panel
- Cementitious Infill Steel Bare Panel
- Die Cast Aluminium Panel
- Wood Core HPL / Vinyl Panel
- Wood Core Bare Panel
- Calcium Sulphate Panel

Rigid Grid & Corner Lock Understructure System



Raised Floor Accessories



Perforated Panel



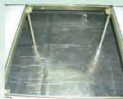
Power Box



Double Cup Panel Lifter



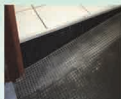
Round Outlet Box



PE Foam



Timber Step



Ramp



Fascia

We also provide refurbishment technology to economically refurbish / upgrade your existing floor panels!

Please contact us at:

Raised Floor & Engineering Supplies (M) Sdn Bhd (385172-M)

15, Jalan Kesuma 2/2, Bandar Tasik Kesuma, 43700 Beranang, Selangor Darul Ehsan, Malaysia.

Tel: +603 - 8723 8843 Fax: +603 - 8723 8844

Website: <http://www.takoraisedfloor.com>

Email: raisedfloor@tako.com.my